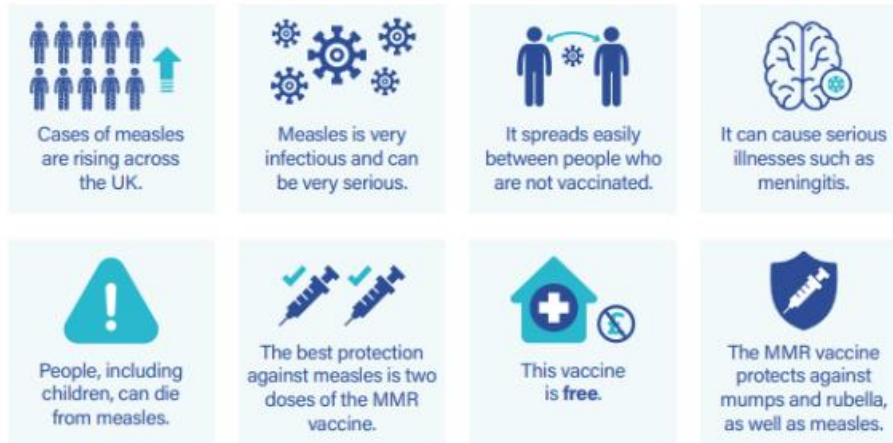


Date:13/05/2024

Protection from measles

Swansea Bay University HB



Communities living in Swansea and Neath Port Talbot are still being encouraged to ensure they are protected against measles as Public Health chiefs warn they believe the outbreak in Gwent is spreading in the community, with nine confirmed cases.

Interim Director of Public Health in Swansea Bay Health Board, Jennifer Davies has highlighted in previous communications that “The MMR vaccine is a safe vaccine and two doses provides excellent protection against measles. We need to make sure as many people as possible are vaccinated, especially children.”

Measles is a highly infectious viral disease and spreads easily amongst those who are unvaccinated, especially in nurseries and schools. If you or your child are not vaccinated and you come into contact with someone with measles, you are likely to contract the disease, become very unwell, and be advised to isolate (from work or school) for up to 21 days, to ensure you or your child do not infect others. Teachers, health and care workers, including all contacts, may also be advised to isolate if they are unvaccinated and come into contact with someone with measles.

To check your or your child’s vaccination status you can contact Swansea Bay UHB’s Immunisation Team on 01792 200492. Alternatively, you can check your child’s red immunisation book or contact your GP. You will need two doses of MMR for full protection

Over this coming May half term, our Immunisation and School Nursing Team will be visiting our local communities offering MMR vaccination catch-up sessions. We would welcome and encourage you to attend your local offering, where you will have the opportunity to have an informed discussion about the MMR vaccine and/or receive the vaccine if you or your child are not yet protected:

Immbulance (mobile vaccination vehicle) Drop-in Schedule

| Day | Date | Location | Time | Vaccine |
|-----------|------------|--|--------------|---------|
| Tuesday | 28/05/2024 | Parc Tawe - outside Ninja Warrior, SA1 2AL | 9.30 - 1630 | MMR |
| Wednesday | 29/05/2024 | Recreation Ground Car Park, Mumbles Road, SA2 0AT. | 9.30 - 1630 | MMR |
| Thursday | 30/05/2024 | Cwmavon Community Centre, SA12 9DF | 9.30 - 1630 | MMR |
| Friday | 31/05/2024 | Neath Angel Square – by Morrisons, SA11 1 DH | 9.30 – 16.30 | MMR |

Community Pop-Up Drop in Sessions

| Day | Date | Location | Time | Vaccine |
|-----------|------------|---|--------------|---------|
| Tuesday | 28/05/2024 | Pontlliw Village Hall, Carmel Rd, Swansea SA4 9EX | 9.30 – 16.30 | MMR |
| Wednesday | 29/05/2024 | Manselton Community Centre, Elgin Street, SA5 8QE | 9.30 – 16.30 | MMR |
| Wednesday | 29/05/2024 | Morrleston Community Centre Pentrepoeth School Road, Morrleston, Swansea, SA6 6HZ | 9.30 – 16.30 | MMR |
| Thursday | 30/05/2024 | Crynant Community Centre, Woodland Road, Crynant SA10 8RF | 9.45– 16.30 | MMR |

You can find out more about the MMR vaccine by following this link to the Public Health Wales website. - <https://phw.nhs.wales/topics/immunisation-and-vaccines/mmr/>

Yours sincerely

Patient Services Manager,

This is a standard information letter, which does not require a signature